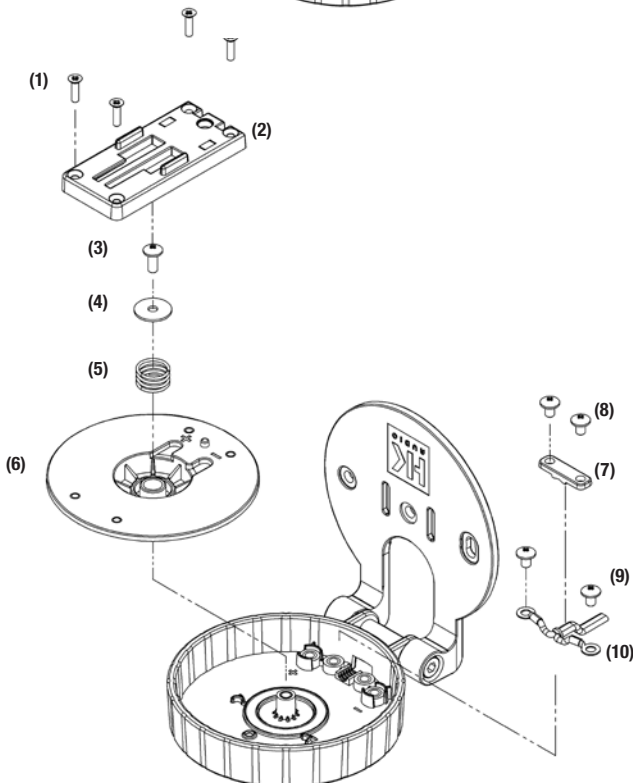
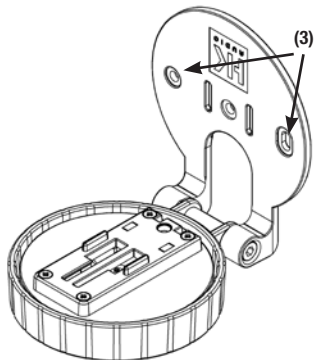
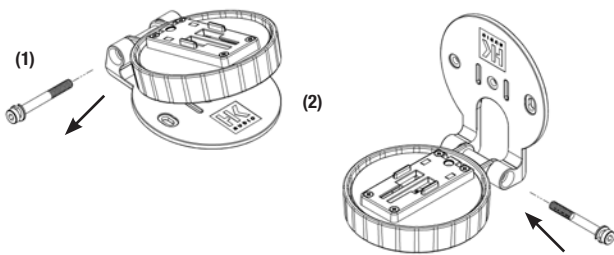
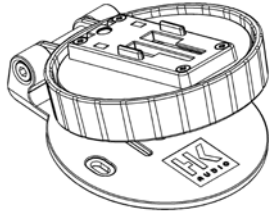


Add-On Package 2 is an accessory kit for HK Audio's Lucas Nano 300. It contains two adjustable Easy-Click mounts with a connecting cord (2 m), as well as an Allen wrench (4 mm). Designed to hold one Lucas Nano 300 mid/high unit each, the mounts swivel and tilt to align speakers.



Applications

The Add-On-Package 2 mounts may be used on a flat surface such as a table and on any wall that is able to handle the load.

For use as table mounts

1. Remove the contents of Add On Package 2 from the box.
2. Set the Lucas Nano 300 mid/high units on the Easy-Click connectors and push them forward toward the front of the mounts until you hear a clearly audible 'click.'
3. Connect the speaker cords to the Lucas Nano 300 subwoofer's Speaker OUT ports.
4. Place the mid/high units on the table, tilting and aligning the speakers as you see fit.

For use as wall mounts

1. Remove the contents of Add On Package 2 from the box.
2. Remove the socket head bolt from the hinge using the included Allen wrench (1).
3. Remove the retainer plate (2) and rotate it 180°.
4. Put the retainer plate back in place and fasten it using the socket head bolt.
5. Place the mount on the wall where you want the speakers to be. Attach it to the wall using 1 to 3 screws up to 5 mm in diameter, threading them through the holes (3) in the retainer plate.
6. Set the Lucas Nano 300 mid/high units on the Easy-Click connectors and push them forward toward the front of the mounts until you hear a clearly audible 'click.'
7. Connect the speaker cords to the Lucas Nano 300 subwoofer's Speaker OUT ports.
8. Now you can adjust the vertical tilt angle as you see fit. You can also turn the speaker 30° to the left or right.

Tip:

If the cord is not long enough, an extension cord with a ¼" (6.3 mm) jack and plug may be used to extend its length. Such cables are available in well-stocked music stores. It may also be replaced with a longer cord that is suitable and laid out properly for the location at which it is to be used.

Replacing the cord

The 2m double-stranded cord with the 6.3 mm plug may be replaced with installed speaker wire for wall mounting.

1. Remove the four flat-head screws (1) on the upper side of the Easy Click connector (2) and flip it back.
 2. Remove the screw below (3) holding the center plate (6) in place.
 3. Remove the washer (4) and spring (5).
 4. Carefully lift the center plate (6) and tip it back.
 5. Remove the retaining cleat (7) by unscrewing the two Phillips head screws (8).
 6. Unscrew the two Phillips head screws (9) and remove the cord (10) from the connecting terminal.
 7. Insert the installed speaker cord through the rear opening and attach it to the terminal by tightening the Phillips head screws (9).
- HEADS UP: Please make sure the polarity is correct. The "+" terminal is on the left and is labeled accordingly.**
8. Proceed in the reverse order to reassemble the mount.